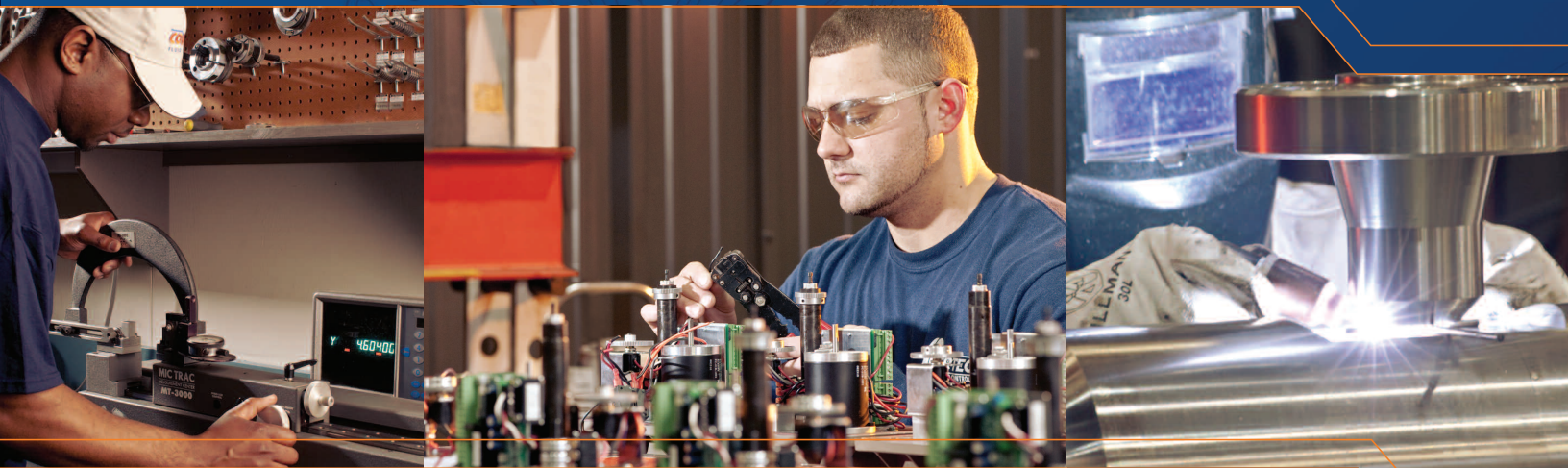


*The Standard  
in Non-Standard Valve Production*

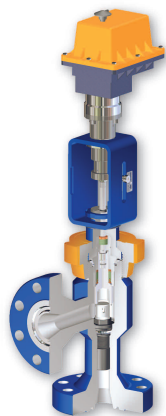


**PRODUCTION CHOKES**

**EXTREME SERVICE CHOKES**

**COMPACT MANIFOLD VALVES**

**FLOW LINE ACCESSORIES**



## **CORTEC**

*offers a comprehensive range of flow line equipment designed and manufactured to meet your needs.*

**EXPERIENCE**

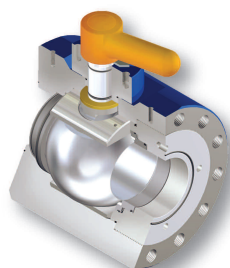
**TECHNOLOGY**

**SERVICE**



CORTEC is a leader in the supply of high integrity flow line equipment used within the upstream and downstream industries. Its divisions CORTEC Fluid Control (CFC) and CORTEC Manifold Systems (CMS) are established global brands. The main manufacturing center is in South Louisiana where equipment is manufactured and tested for use in some of the most prestigious projects both in the GOM and International locations.

CORTEC's management team is immensely experienced and has a reputation of providing high quality equipment and superior customer service.





## PRODUCTION CHOKES

### **Actuated Adjustable Positive**

- Needle & seat configuration
- Cage trim configuration
- 2,000 - 20,000 psi
- Severe service applications
- PSL 1 – PSL 3G
- API Spec Q1 standard
- Built to meet or exceed API 6A specifications

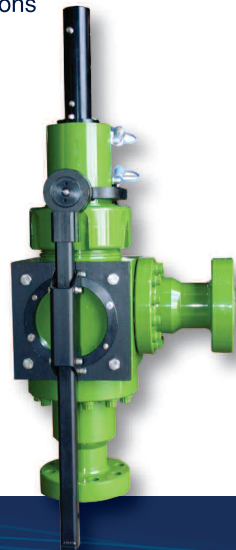
Each choke can be configured to your project requirements. This allows the user to adapt to the changing well flow conditions over the life of the field.

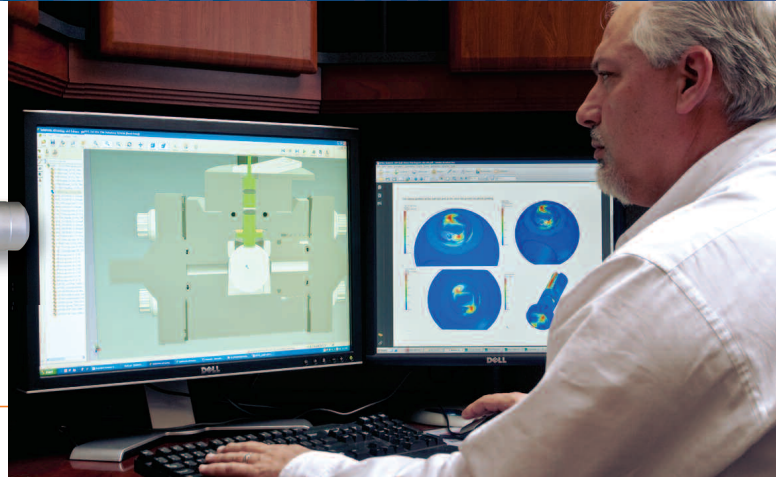
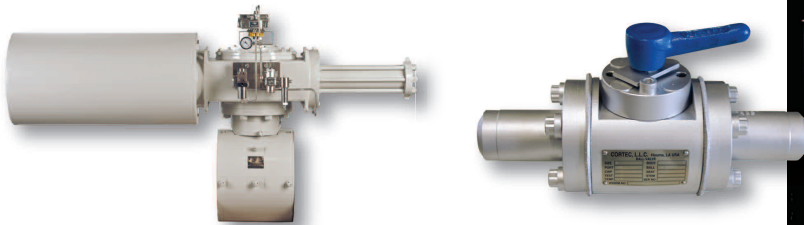
CORTEC uses only high integrity materials to manufacture some of the most innovative, yet simple to use choke designs known today.

## EXTREME SERVICE CHOKES

- **Operators:** hydraulic gear, piston or manual gear
- **Gantry System:** allows the operator to slide and swing the bonnet assembly for quick, field-friendly trim changes
- **Control Consoles:** built to customer specifications
- **Service Tools:** seat, gate and stem removal tools along with bonnet spanner wench simplify service and streamline trim changes.

CORTEC Extreme Service Chokes can be custom designed to meet your service needs. Applications include: drilling, choke and kill, coil tubing, well control, frac flowback, under-balanced drilling and snubbing operations. Available trim sizes: 1-1/2", 2" and 3" max orifice pressure balanced configurations.





## COMPACT MANIFOLD VALVES

### **Compact Ball Valves**

### **Compact Check Valves**

### **Compact Flanges**

### **Manifold Skid Packages**

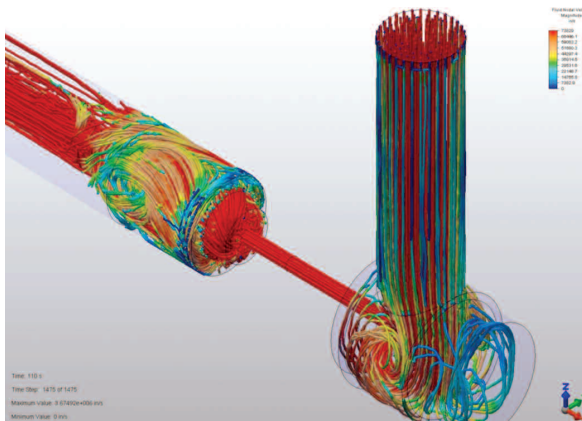
### **Launcher Receiver Packages**

- Sizes ranging from 1" - 12"
- Up to API 15,000 psi
- Full range of end connectors
- Available in all grades of carbon steel and alloy steels, stainless steel and corrosion-resistant alloys.

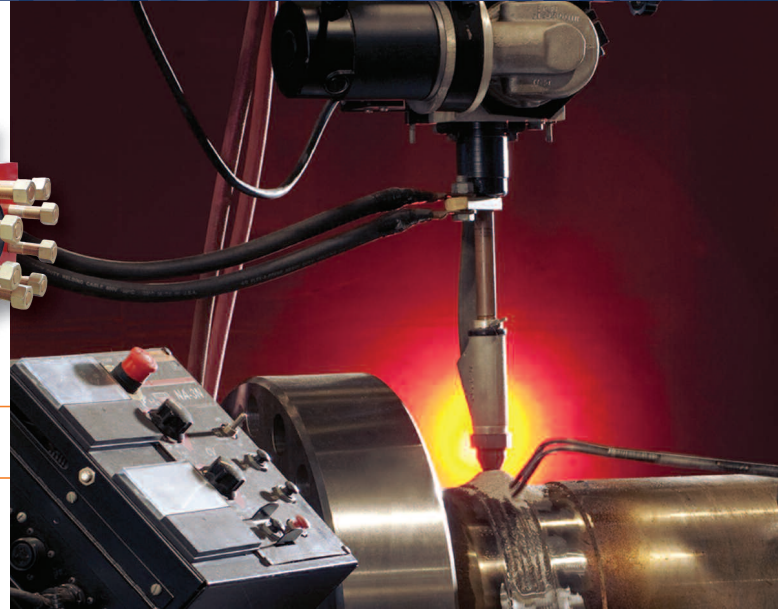
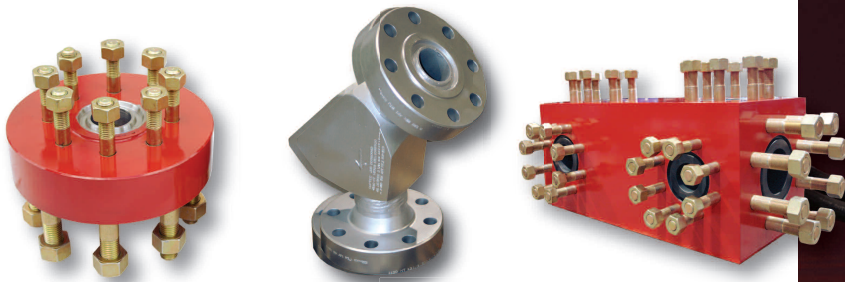
CORTEC manifold valves are typically designed for high pressure isolation and offer considerable space and weight savings when compared to traditional ANSI and API class valves. CORTEC manifold valves are available in a range of bore sizes and working pressures.



## ENGINEERING SERVICES



CORTEC has a team of qualified engineers and designers who have extensive product and industry knowledge and utilize the latest full parametric 3D modeling techniques integrated with Finite Element and Computational Fluid Dynamic analytical software. Design management assures compliance with industry regulations, as applicable, including the Pressure Equipment Directive (PED). CORTEC's industry links provide access to a network of subject matter experts in many technical fields. Essentially, CORTEC takes full product design responsibility and provides engineering solutions.



## FLOW LINE ACCESSORIES

**Weld Neck Flanges**

**Instrument Flanges**

**Adapter Spools**

**Blind Flange Sets**

**Integral Tee  
Assemblies**

**Blast Joints**

**Swivel Flanges**

**Crosses**

**Block Tees**

**Tees**

- *Stainless and inconel materials and/or cladding available*
- *Pressure classes up to 20,000 psi*
- *Specialty blueprint machining*

CORTEC offers a range of flow line equipment to interface with other products manufactured in accordance with ANSI and API standards and supplies flow line equipment as component parts or assembled equipment.



CORTEC designs equipment in accordance with all relevant industry standards and some of the most stringent customer standards in the industry. CORTEC's facility operates an established Quality Management System, fully accredited in accordance with API-Q1 and ISO 9001:2008.

**Houma 985.223.1966**

**Lafayette 337.267.3100**

**Houston 713.821.0050**

**CORTEC**  
FLUID CONTROL



**CORTEC**  
FLUID CONTROL

**CMS**  
CORTEC MANIFOLD SYSTEMS

**CORTEC**

Corporate Office  
208 Equity Blvd.  
Houma, LA 70360  
+1.985.223.1966 fax: +1.985.223.1936  
sales@uscortec.com

**CORTEC**

Technical and Commercial Management  
Westchase Corporate Center  
10111 Richmond Avenue, Suite 300  
Houston, TX 77042  
+1.713.821.0050

**CMS**

205 Marcon Drive  
Lafayette, LA 70507  
+1.337.267.3100 fax: +1.337.267.3138  
sales@cortec-cms.com

[www.uscortec.com](http://www.uscortec.com)

Houma 985.223.1966 Lafayette 337.267.3100 Houston 713.821.0050