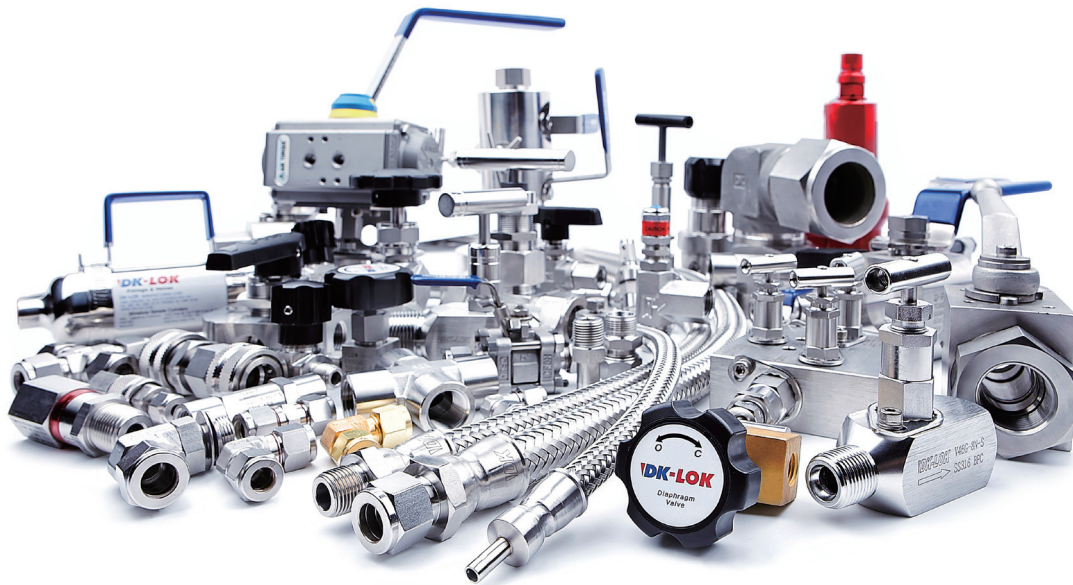


Products Condensed Catalog



- DK-LOK**
Tube Fittings
- DK-LOK**
Bite Type Fittings
- DK-LOK**
Valves
- DK-LOK**
Instrumentation Pipe & Weld Fittings
- DK-LOK**
Hose & Quick Connectors



DK-Lok VR Series Tube Fitting

Patent Registration

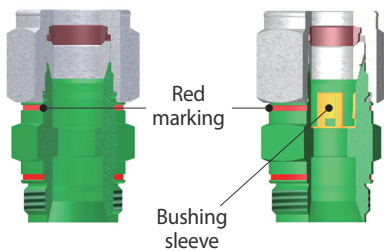


VR Series hook type

- 1/4 – 1 in. OD.
- 8mm – 25mm OD.
- Heat-Code Traceability.
- Vibration Resistant design (Patent No. 10-2012-0042936)
- 1-1/4 turn (spanner-tight) guaranteed by visible detection of veiled red marking.
- Gauge-unnecessary Feature.
- Reusable.
- Leak-free performance across all applications in heavy vibration, high thermal stress, extreme impulse, and vacuum application.

VR Series Hook type

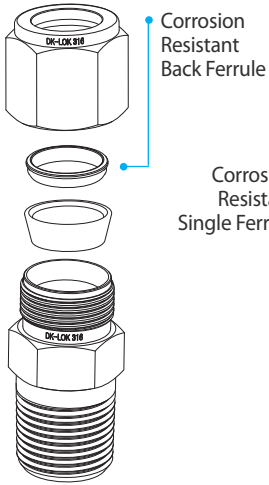
VR Series with bushing sleeve



VR Series with bushing sleeve

- 1/4 – 1/2 in. OD.
- 8mm – 12mm OD.
- Heat-Code Traceability.
- Error proofing design (Patent No. 10-2011-0130057)
- Reusable.
- Gauge-unnecessary Feature.
- Leak-free performance across all applications in heavy vibration, high thermal stress, extreme impulse, and vacuum application.

Twin Ferrule



Single Ferrule



Standard Features

- 1/16 - 2 in. OD.
- 2mm - 50mm OD.
- Heat-Code Traceability.
- Reusable.
- Gaugeable Feature.
- Rolled Male Thread Construction.
- Leak-free performance across all applications in heavy vibration, high thermal stress, extreme impulse, and vacuum application.

DK-Lok Corrosion-Resistant Ferrules provide;

- No formation of carbides for excellent corrosion resistance.
- Retention of Stainless steel non-magnetic characteristics.
- Service in chloride, sulfide and acid fluid proven to be superior to conventional selectively hardened ferrules.
- Excellent gripping and sealing integrity across tubing wall thickness and outside diameter combinations of stainless steel tubing.

**DK-Lok Tube Fittings
Stainless Steel**



**DK-Lok Tube Fittings
Brass, Carbon Steel**



**DK-Lok Tube Fittings
Fuse Plug**



**DK-Lok Tube Fittings
PTFE**



**DK-Lok Tube Fittings
Flanges**



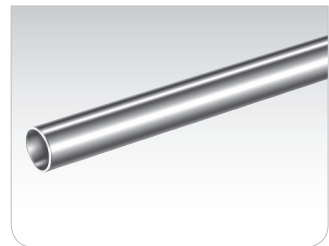
**DK-Lok Tube Fittings
Dielectric Fittings**



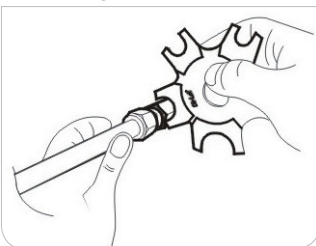
**DK-Lok Z Series
Single Ferrule Fittings**



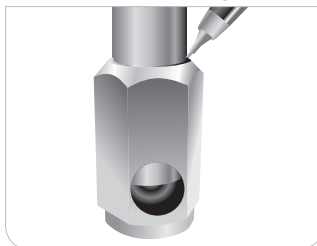
**DK-Lok Tubing
Stainless Steel, Super Duplex, and 904L**



**DK-Lok
Gap Gauge**



**DK-Lok
Tube Depth Marking Tool**



**DK-Lok
Pre-Swaging Hand Tool**



**DK-Lok
Hydraulic Swaging Unit**



DK-Lok Instrumentation Pipe & Weld Fittings



Thread & Weld Fittings



- Pipe thread 1/8 - 1 in.
- Tube Socket Welding 1/8 - 1 in.
- SS316, Brass, and Carbon Steel

6K Thread Fittings for Over 1"



- Fixed Pressure Rating : 6,000 psig
- Pipe thread 1 1/4, 1 1/2, and 2 in.
- Stainless Steel

10K Thread Fittings



- Fixed Pressure Rating : 10,000 psig
- Pipe thread 1/8 - 1 in.
- Stainless Steel

DK-Lok Bite Type Tube Fittings / Hydraulic Pipe Fittings



Bite Type Tube Fittings



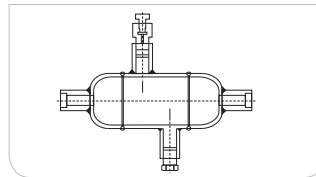
- JIS B2351 & DIN 2353 Standard
- 6 to 42 mm OD
- Stainless Steel, Carbon Steel, and Brass

Hydraulic Pipe Fittings



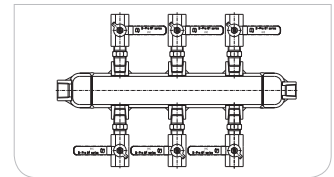
- ASME B16.11 Standard
- Class 2,000 / 3,000 / 6,000 / 9,000
- Stainless Steel and Carbon Steel
- Pipe thread 1/8 to 2 in.

CP Series



- Hydraulic Condensate Pot
- Stainless Steel and Carbon Steel

J Series

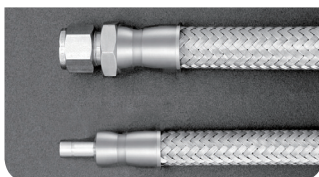


- Distribution Manifolds (Air Header)
- Stainless Steel and Carbon Steel

DK-Lok Hose & Quick Fittings



High Pressure Metal flexible Hoses



- Up to 3,600 psig (248 bar)
- -325 to 800 °F (-200 to 426 °C)
- Stainless Steel
- DK-Lok 1/4 to 1/2 in. OD
- Male/Female 1/4 to 1/2 in. NPT

Medium Pressure Metal Flexible Hoses



- Up to 1,600 psig (110 bar)
- -325 to 800 °F (-200 to 426 °C)
- Stainless Steel
- DK-Lok 1/4 to 2 in. OD
- Male/Female 1/4 to 2 in. NPT

Hose Adapter Fittings



- Stainless Steel and Brass
- 1/8 to 1 in. Hoses

Push-On Hose Fittings



- Stainless Steel
- 1/4 to 1 in. Push-On Hoses

DQ Series Quick Connectors



- Bi-directional flow design
- Up to 3,000 psig
- Stainless Steel and Brass
- DK-Lok 1/8 to 1/2 in. OD
- Male/Female 1/8 to 1/2 in. NPT

DQ Series Keyed Connectors



- Key prevents Intermixing mechanically & visually.
- Applicable to multi-fluids and multi-pressure systems.

DQM Series



- Miniature Quick Connectors
- Bi-directional flow design
- Up to 4,000 psig
- Stainless Steel and Brass
- DK-Lok 1/16 to 1/8 in. OD
- Male/Female 1/16 to 1/8 in. NPT

DF Series



- Full Flow Quick Connectors
- Bi-directional flow design
- Up to 6,000 psig
- Stainless Steel and Brass
- DK-Lok 1/4 to 1 in. OD
- Male/Female 1/4 to 1 in. NPT

DK-Lok Check and Relief Valves

DK-LOK[®]
Valves

V33 Series Poppet Check Valves



- Working Pressure : 3,000 psig
- Cracking Pressure : 1/3 to 100 psig
- Stainless Steel and Brass
- DK-Lok 1/8 to 1 in. OD.
- Pipe thread 1/8 to 1 in.

VP33 Series One piece Check Valves



- Working Pressure : 3,000 psig
- Cracking Pressure : 1/3 to 25 psig
- Stainless Steel and Brass
- Pipe thread 1/4 to 1/2 in.

VH36 Series High Pressure Check Valves



- Working Pressure : 6,000 psig
- Cracking Pressure : 1/3 to 25 psig
- Stainless Steel
- DK-Lok 1/8 to 1 in. OD
- Pipe thread 1/8 to 1 in.

VA33 Series One-Piece Adjustable Check Valves



- Working Pressure : 3,000 psig
- Cracking Pressure : 3 to 600 psig
- Stainless Steel
- Pipe thread 1/4 to 1/2 in.

VDA33 Series In-Line Adjustable Check Valves



- Working Pressure : 3,000 psig
- Cracking pressure : 3 to 600 psig
- Stainless Steel
- DK-Lok 1/4 in. 6mm, and 8mm OD

VL36 Series Lift Check Valves



- Working Pressure : 6,000 psig
- Reverse flow closes the valve
- Up to 900 °F (482 °C)
- DK-Lok 1/4 to 3/4 in OD
- Pipe thread 1/8 to 1/2 in.

V63/V66 Series Relief Valves



- Working Pressure : 6,000 psig
- Cracking pressure: 50 to 6,000 psig
- -18 to 400 °F (-28 to 204 °C)
- Stainless Steel with FKM seals
- DK-Lok 1/4 to 1/2 in. OD
- Pipe thread 1/4 to 1/2 in.

V66T Series Relief Valves



- Working Pressure : 6,000 psig
- Cracking Pressure : 540 to 640 psig
- -20 to 250 °F (-29 to 121 °C)
- Stainless Steel with FKM Seat
- Male to Female 1/4 in. NPT

DK-Lok Filters and Excess Flow Valves

V73/V76 Series Filters



- Working Pressure
 - 6,000 psig for V76 Series
 - 3,000 psig for V73 Series
- Stainless Steel
- DK-Lok 1/8 to 1/2 in. OD
- Pipe thread 1/8 to 1/2 in.

VX36 Series Excess Flow Valves



- Working Pressure : 6,000 psig
- Up to 204 °C (400 °F)
- Designed to stop uncontrolled release of system media.
- DK-Lok 1/4 to 1/2 in. OD
- Pipe thread 1/8 to 1/2 in.

DK-Lok Valve for Offshore Platform

Double Block and Bleed Valves



- Class 150 through 2,500 to ASME B16.5
- Up to 204 °C (400 °F)
- SS316
- Flange size 1/2 to 2 in. (DN15 – DN50)
- Blowout proof valve stem and needle
- Fire-tested to BS 6755 part

Monoflanges



- Class 150 through 2,500 to ASME B16.5
- Up to 204 °C (400 °F)
 - PTFE packing
- Up to 454 °C (850 °F)
 - graphite packing
- Flange size 1/2 to 2 in. (DN15 – DN50)

DK-Lok Bellows, Needle and Toggle Valves and Manifolds



V13 Series Bellows Valves



- Working Pressure : 2,500 psig
- Vacuum and high pressure application
- Stainless Steel
- DK-Lok 1/4 to 1/2 in. OD
- Pipe thread 1/4 to 1/2 in.

V15 Series Integral Bonnet Needle Valves



- Working Pressure : 5,000psig
- Regulating/Vee/Soft Seat
- Stainless Steel, Brass, and Exotic Alloys
- DK-Lok 1/8 to 3/4 in. OD
- Pipe thread 1/8 to 1/2 in.

V16 Series Severe Service Union Bonnet Valves



- Working Pressure : 6,000 psig
- Non-rotating globe stem tip
- Stainless Steel and Exotic Alloys
- DK-Lok 1/4 to 1 in. OD
- Pipe thread 1/8 to 1 in.
- Pipe socket weld 1/4 to 1/2 in.

VB16 Series Integral Bonnet Needle Valves



- Working Pressure : 6,000 psig
- Compact design
- Vee Tip / Soft Seat
- Stainless Steel
- DK-Lok 1/4 to 1/2 in. OD
- Pipe thread 1/4 to 3/4 in.

VM Series Metering Valves



- Working Pressure:
 - 2,000 psig for VM1D Series
 - 1,000 psig for VM3D/VM6D Series
- Stainless Steel and Brass
- DK-Lok 1/16 to 3/8 in. OD
- Pipe thread 1/8 to 1/4 in.
- Panel mount with no handle removal.

V96 Series Rising Stem Plug Valves



- Working Pressure : 6,000 psig
- Acetal replaceable soft seat
- Straight-through roddable orifice
- Stainless Steel
- Pipe thread 1/4 to 3/4 in.

V46A Series Hex. Body Needle Valves



- Working Pressure : 10,000 psig
- Packing adjustment externally
- Stainless Steel and Carbon steel
- DK-Lok 1/4 to 1/2 in. OD
- Pipe thread 1/4 to 3/4 in.

VEX110 Series Needle Valves



- Working Pressure : 10,000 psig
- Unique sealing cup design on packing
- Stainless Steel
- Pipe thread 1/4 to 1/2 in.

V103 Series Toggle Valves



- Working Pressure : 300 psig
- Instant open and close the valve for sampling and testing equipment
- Stainless Steel and Brass
- DK-Lok 1/8 to 1/2 in. OD
- Pipe thread 1/8 to 3/8 in.

VD3 Series Diaphragm Valves



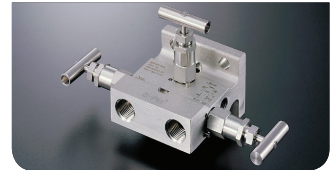
- Working Pressure : 3,500 psig
- Instant open and close the valve with no o-ring, no packing or no bellows in the flow stream
- Stainless Steel and Brass
- DK-Lok 1/4 to 1/2 in. OD
- Pipe thread 1/4 to 3/8 in.

V56 Series Instrument Manifolds



- Working Pressure : 6,000 psig
- Vertical Direct / Remote mount
- Stainless Steel and Carbon Steel
- 2, 3, and 5 valve as standard

V56 Series Instrument Manifolds



- Working Pressure : 6,000 psig
- Single / Double Flange Direct mount
- Stainless Steel
- 2, 3, and 5 valve as standard

DK-Lok Bleed, Purge, Gauge Root and Block & Bleed Valves

VBV Series Bleed Valves



- Working Pressure : 10,000 psig
- Vent the signal line pressure to atmosphere to assist in calibration of control valves or multi-valve manifolds
- Stainless Steel and Carbon Steel
- Male pipe thread 1/8 to 1/2 in.

VPV Series Purge Valves



- Working Pressure : 4,000 psig
- For bleeding, venting, and draining of system fluids.
- Stainless Steel and Brass
- DK-Lok 1/8 to 1/2 in.
- Pipe thread 1/8 to 1/2 in.

V46 Series Gauge Root Valves



- Working Pressure : 6,000 psig
- Valve for pressure gauge with vent port.
- Stainless Steel and Carbon Steel
- Pipe thread 1/2 to 3/4 in.

V46V2 Series Block and Bleed Valves



- Working Pressure : 6,000 psig
- Bleeding, venting, and draining of system fluids
- Stainless Steel
- Male to female 1/2 in. NPT



VC86 Series CNG/NGV Ball Valves



- Working Pressure : 274 bar@120°C
- Dynamic seat design
- DK-Lok 1/2 to 3/4 in. OD
- Pipe thread: 1/2 to 1 in.

V64 Series High Flow Relief Valves



- Working Pressure : 6,000 psig
- Cracking pressure : 15 to 5,500 psig
- Orifice: 0.404 in. (10.26 mm)
- Air, Gases, CNG, and Liquid
- Pipe thread: 1/2 to 1 in.

VCH86 Series Alternative Fuel Service Ball Valves



- 2-way on-off valves
- Working Pressure : 274 bar@120°C
- Dynamic seat design
- Orifice: 12.0 mm (0.472 in.)
- DK-Lok 3/8 to 1 in. OD
- Pipe thread: 3/8 to 3/4 in.

VCT86 Series Trunnion Ball Valves



- 2-way on-off valves
- 3-way switching valves
- Working Pressure : 274 bar@120°C
- Stainless Steel
- DK-Lok 1/4 to 1/2 in. OD
- Pipe thread 1/8 to 1/4 in.

DK-Lok Ball and Plug Valves

V23 Series Plug Valves



- Working Pressure : 3,000 psig
- Stainless Steel and Brass
- Forward flow throttling
- DK-Lok 1/8 to 1/2 in. OD
- Pipe thread 1/8 to 1/2 in.

V81 Series General Purpose Ball Valves



- Working Pressure : 2,000 psig
- Stainless Steel and Brass
- DK-Lok 1/4 to 1 in. OD
- Pipe thread 1/4 to 1 in.

V82 Series Lowest Dead Volume Ball Valves



- Working Pressure : 3,000 psig
- Stainless Steel and Brass
- 2-way and 3-way actuation
- DK-Lok 1/16 to 3/4 in. OD
- Pipe thread 1/8 to 1/2 in.

V824 Series Lowest Dead Volume Ball Valves



- Crossover 4-way Ball valves
- Working Pressure : 2,500 psig
- Stainless Steel
- Pipe thread 1/8 - 1/2 inch

V825 Series Lowest Dead Volume Ball Valves



- Switching 5-way Ball Valves
- Working Pressure : 2,500 psig
- Stainless Steel
- Pipe thread 1/8 - 1/2 in.

V83 Series Swing-Out Ball Valves



- Working Pressure : 3,000 psig
- Stainless Steel and Carbon Steel
- DK-Lok 1/4 to 1 in. OD
- Pipe thread 1/8 to 1 in.

V86 Series High Pressure Ball Valves



- 2-way on-off valves
- 3-way diverter valves
- Working Pressure : 10,000 psig
- Stainless Steel and Carbon Steel
- DK-Lok 1/4 to 1 in. OD
- Pipe thread 1/4 to 1 in.

VT86 /VTH86 Series Trunnion Ball Valves



- 2-way on-off valves
- 3-way switching valves
- Working Pressure
 - 6,000 psig for VT86 Series
 - 10,000 psig for VTH86 Series
- Stainless Steel
- DK-Lok 1/4 to 1/2 in. OD
- Pipe thread 1/8 to 1/4 in.

VH86 Series Multi-Purpose Ball Valves



- 2-way bi-directional valves
- 3-way diverter valves
- Working Pressure : 6,000 psig
- Stainless Steel
- DK-Lok 1/8 to 3/4 in. OD
- Pipe thread 1/4 to 1/2 in.

VH86 Valve with Actuator



- Pneumatic Actuator
- 90/180 degree actuation
- Single and Double return

V87 Series DIN Standard Ball Valves



- Up to 7,250 psig (500bar)
- Up to 100°C (212°F)
- DIN 1.4404, SS316L
- DIN O.D 6mm ~ 38mm
- Pipe thread 1/8 ~ 1 in.
- Ball valve to DIN standard.

**Authorized DK-Lok
Distributor in your territory**