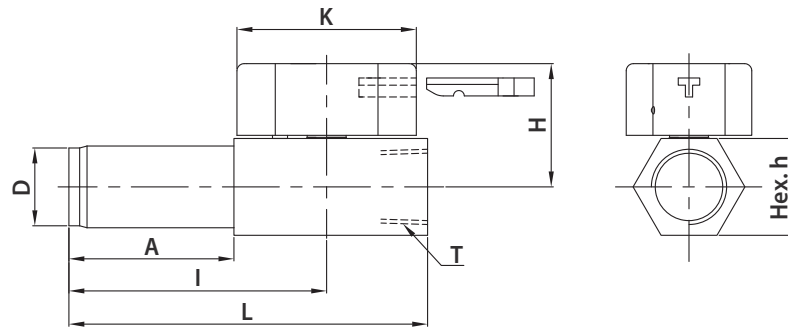




Features

- Compact barstock construction for high integrity.
- Blow-out proof design with internally loaded stem.
- Floating Ball design providing seat wear compensation.
- Micro-finished ball ensures a leak-tight shut-off on pressure.
- Standard PTFE seat material.

Ordering Information and Dimensions



Valve Ordering Number	End Connection		Dimensions, mm (in.)							
	Inlet, D	Outlet, T	Orifice	Cv	L	H	Hex. h	A	I	K
V81C WF	15A8R	Pipe 15A 1/2" Female PT	9.0(0.35)	9.25	100.0(3.94)	34.4(1.35)	27.0	46.0(1.81)	71.9(2.83)	50.0(19.7)
V81D WF	20A12R	Pipe 20A 3/4" Female PT	12.5(0.49)	12.65	105.0(4.13)	39.0(1.54)	32.0	46.0(1.81)	73.4(2.89)	60.0(2.36)
V81E WF	25A16R	Pipe 25A 1" Female PT	16.0(0.63)	17.35	120.0(4.72)	42.0(1.65)	38.0	45.0(1.77)	80.6(3.17)	60.0(2.36)

All dimensions shown are for reference only and are subject to change.

Factory Test

- Every valve is factory tested with nitrogen gas @41 bar (600 psig) for leakage at the seat to maximum allowable leak rate of 0.1 SCCM.
- The packing is tested with nitrogen for no detectable leakage.

How to order

Select desired valve basic ordering number, and options from designators listed below.

Example: V81CWF

- 15A8R	- KB	- S	
Connection, Thread PT	Seat	Handle Type	Body Material
Pipe 15A to Female 1/2 PT : 15A8R Pipe 20A to Female 3/4 PT : 20A12R	Nil : PTFE	KB : Key lock handle Blue KR : Key lock handle Red	S : ASTM A276 TYPE 316

IDK-LOK®
Fittings & Valves



Safe Valve Selection

The selection of a valve for any application or system design must be considered to ensure safe performance. Valve function, valve rating, material compatibility, proper installation, operation and maintenance remain the sole responsibility of the system designer and the user. DK-Lok accepts no liability for any improper selection, installation, operation or maintenance.

© Copyright 2017. All Rights Reserved.

IDK-LOK®
Fittings & Valves
www.dklok.com

IDK-LOK Corporation
Mailing Address
7, Golden root-ro 129beon-gil, Juchon-myeon,
Gimhae-si, Gyeongsangnam-do, South Korea 621-842

DK-Lok contact information
Tel. (82) 55-338-0114
Fax. (82) 55-901-0143
E-mail : sales@dklok.com

For International customers
Tel. (82) 55-338-0031/2
Fax. (82) 55-901-0142
E-mail : dklok@dklok.com